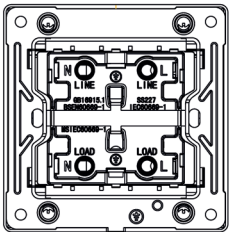
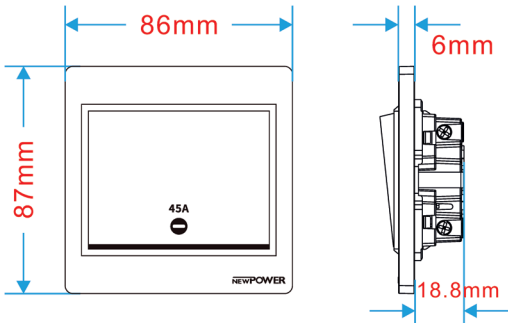


THE  
THINNEST  
you'll ever **see**

this newpower product Has good contact inside, assuring good electrical conductivity & safety use. It has a stylish modern, slim profile.

AVAILABLE IN  
MATTE BLACK,  
DARK GRAY  
WHITE

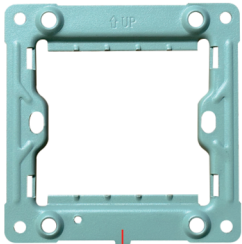
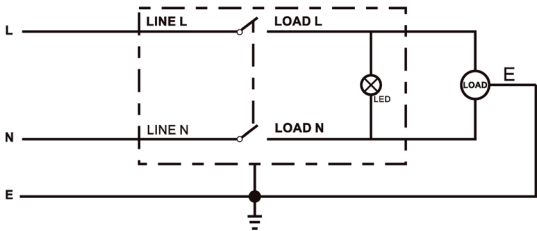
DESCRIPTION	DETAILS
Product Description	NEWPOWER SIZE 7X7 45A DOUBLE POLE SWITCH WITH LED
Product Catalog No.	NP-345L
Standard	IEC60669-1:2017
Rated Current	45A max
Rated Voltage	250V AC
Frequency	50 / 60 Hz
Product Dimensions	86 x 87 x 31 mm
Accessories	Mounting screws - 2 x M3.5
Mounting	Flush Mounting
Fixing Center	60.3 mm
Auxiliary fixing options	4 Corners
Mounting box size	35 mm
Actuating member	Rocker
Endurance	10,000
Enclosure Material	PC
Contact material	Copper
Terminal for current carrying part	Red copper 99.9%
Screw terminal	Brass 62%
Terminal Identifier	LINE L ,LOAD L and LINE N, LOAD N
Conductor size	16 mm <sup>2</sup>
Terminal Capacity	2 x 6 mm <sup>2</sup> 1 x 10 mm <sup>2</sup> 1 x 16 mm <sup>2</sup>
Tightening torque	2.0 Nm
Screw size	M5



Cable access 16mm<sup>2</sup>

Pattern No.:2

WIRING DIAGRAMS



Steel structure  
base

