

INFRARED PRESENCE SENSOR

1000W RECESSED FORTE

WHITE

SPECIFICATION:

Power Source: 220-240V/AC

Power Frequency: 50/60Hz

Ambient Light: <3-2000LUX (adjustable)

Time Delay: Min.10sec±3sec

Max.30min±2min

Rated Load: Max.2000W

1000W

Detection Range: 360°

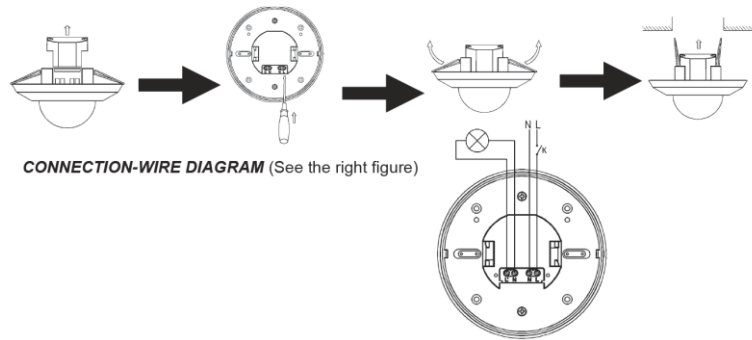
Detection Distance: 20m max(<24°C)

Working Temperature: -20~+40°C

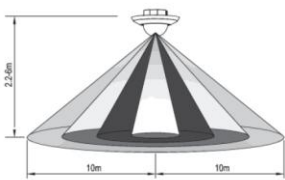
Working Humidity: <93%RH

Power Consumption: approx 0.5W

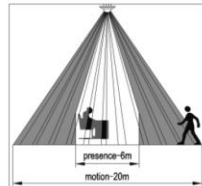
Installation Height: 2.2-6m



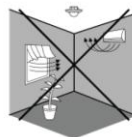
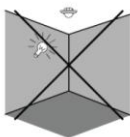
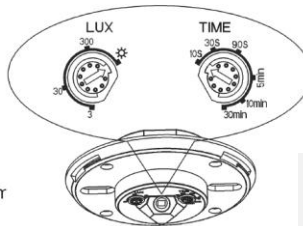
SENSOR INFORMATION:



Height of installation:2.2-4m



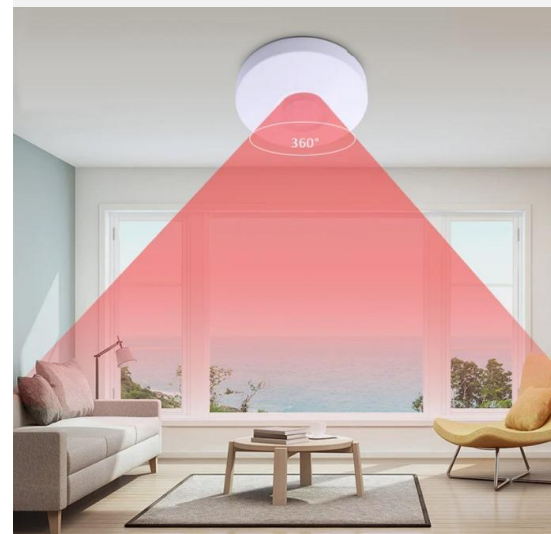
Detection Distance: Max.8m



Areas of application

Suitable for – indoor applications

- Offices
- Corridors
- Stairways
- Residential interiors
- Commercial buildings



Note: when testing in daylight, please turn LUX knob to (SUN) position, otherwise the sensor lamp could not work! If the lamp is more than 60W, the distance between lamp and sensor should be 60cm at least.