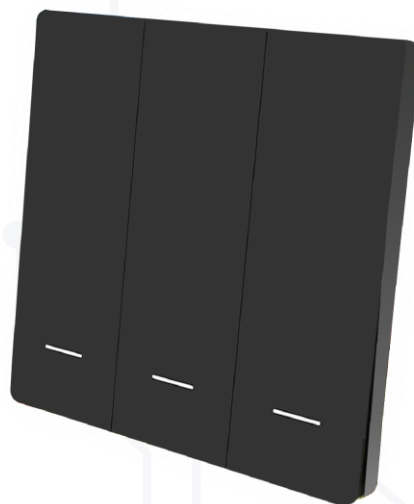


SMART SWITCH ZIGBEE

caption	the value
Rated Load	MAX 700W/GAN
Rated voltage	100-250V
Frequency	50/60Hz
Conductor Size	4 mm
Screw Terminal	Steel
Contact Material	Copper
Enclosure Material	Plastic
Wireless Standard	IEEE802.15.4
Humidity	≤80%
Ta	-10~+45°C
Safety Standard	60669-2-3
Size	70*70 mm
Cutout	36 mm
Width	86 mm
Height	86 mm
Wireless Type	Zigbee
Main Color of the luminaire	Black

Super protection:

NEWPOWER Smart Switch Zigbee is a high-quality, modern smart switch designed for seamless home automation. With advanced wireless connectivity options, it allows users to control their appliances remotely through a smartphone. Its sleek glass panel design and multiple color options ensure it complements any home decor.



This switch supports various gang configurations, making it suitable for different room setups. It features scheduling functions, mobile control, and family sharing, providing convenience and efficiency for smart home enthusiasts. The switch also operates without a neutral wire, making installation easier in various electrical setups.

Key Functions & Features:

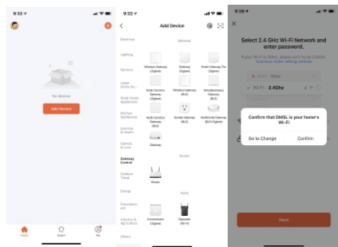
- Schedule Automation: Manage appliances based on predefined schedules, enhancing energy efficiency.
- Mobile App Control: Easily control and monitor your home devices remotely.
- Family Sharing: Share control access with family members for added convenience.
- Scene Switch & Curtain Switch Compatibility: Flexible integration with different home automation setups.
- Easy Installation: No neutral wire required (N-L Switch), making it compatible with various wiring configurations.

## SMART SWITCH ZIGBEE

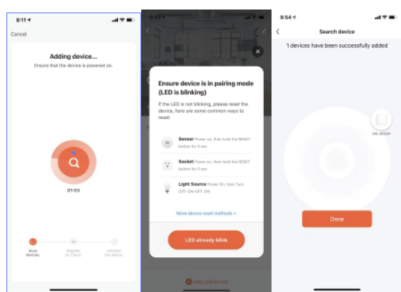
### Installation Methods:

The Smart Switch Zigbee offers a straightforward installation process suitable for different wiring setups. It can be easily mounted on standard electrical wall boxes, ensuring a secure fit. The device supports both N-L (neutral-live) and non-neutral wiring, providing flexibility for various home electrical configurations. Follow the step-by-step guide included with the product for safe and efficient installation.

#### 8. Configure the network (N-L switch and No neutral switch network steps)



1. Scan the QR code on the box to download and open the APP
2. Click "Add Device" and select "Gateway Central Control" to add your Zigbee gateway
3. After entering WiFi and password, click Next, select "Confirm indicator flash" and click Next.

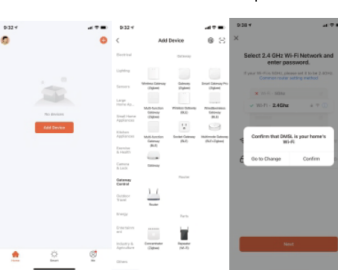


4. Wait for the gateway to be configured
5. On the gateway interface, click "Add Subdevice" and confirm that the indicator blinks quickly
6. Long press the distribution button for 5 seconds, and wait for the light to flash

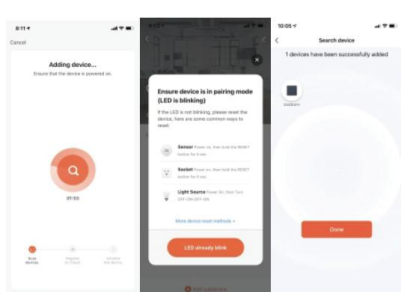


7. The switch is configured successfully

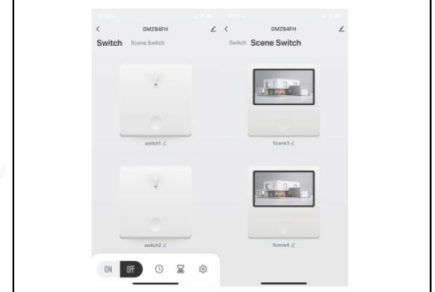
#### Combination switch network distribution steps



1. Scan the QR code on the box to download and open the APP
2. Click "Add Device" and select "Gateway Central Control" to add your Zigbee gateway
3. After entering WiFi and password, click Next, select "Confirm indicator flash" and click Next.

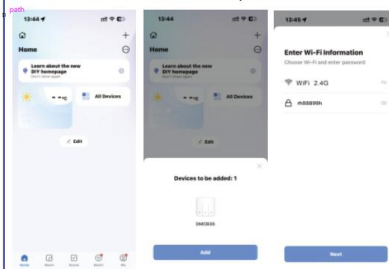


4. Wait for the gateway to be configured
5. On the gateway interface, click "Add Subdevice" and confirm that the indicator blinks quickly
6. Long press the distribution button for 5 seconds, and wait for the light to flash

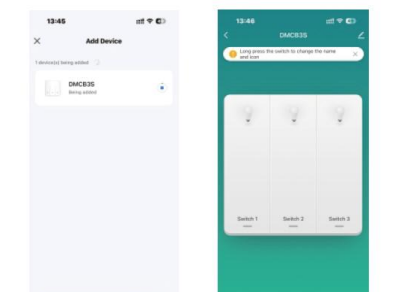


7. The switch network distribution is successful

#### WiFi switch network distribution steps



1. Scan the QR code on the box to download and open the APP
2. Switch your phone's WiFi network to 2.4G frequency
3. Press and hold the switch button for 6 seconds, wait for the indicator light to flash.



4. Wait for the device to be added in the APP interface until the network configuration is successful



 **Download App**